

# Explore public data

and discover insights into companies, plays and well production

**VISAGE allows you to quickly and easily:**

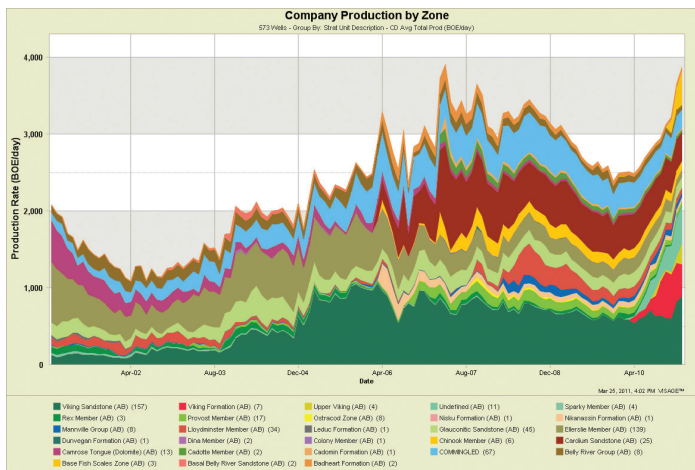
- Normalize production data and generate type curves by operator, production year, township and well configuration
- Garner insight into *who is doing what* by well type, horizontal direction, leg count and fracs
- Perform competitor analysis (tell a company's story visually)
- Analyse production decline and productivity coefficients
- Use percentile analysis to perform production and reserves reality checks
- Compare key performance indicators (e.g. steam/oil ratio)
- Examine an entire play (e.g. type curves, payout analysis, operator comparison, fairway analysis)
- Integrate your own proprietary information with public data for comprehensive analysis



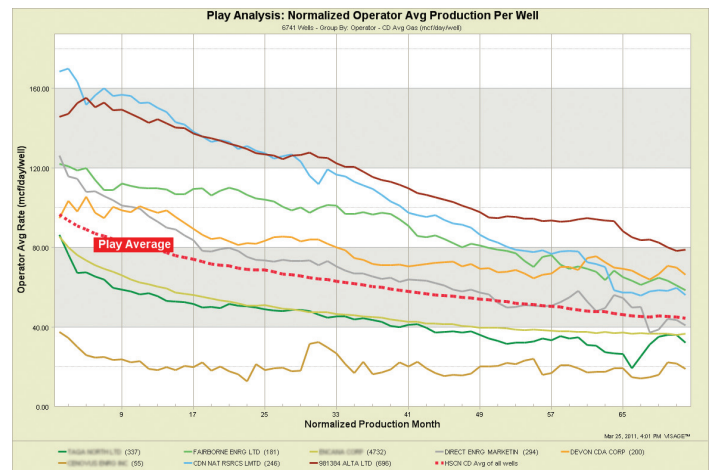
Using VISAGE to analyse public data, we can compare ourselves to other companies in the industry and identify things that we can do differently.



Kory Galbraith, VP Engineering, Elkhorn



Visually understand play or company production and how it has changed over time.



Compare operator production performance using normalized type curve analysis relative to the Play Average.



VISAGE is a data exploration and visual analytics software application for the petroleum industry. VISAGE enables companies to access and analyze data from any data source. With an easy-to-use interactive interface, VISAGE provides sophisticated analysis capabilities. In 2010, VISAGE had over 400 active users who collectively ran over 63,000 charts and reports.

For more information, or to book a demo, contact [info@visageinfo.com](mailto:info@visageinfo.com)